

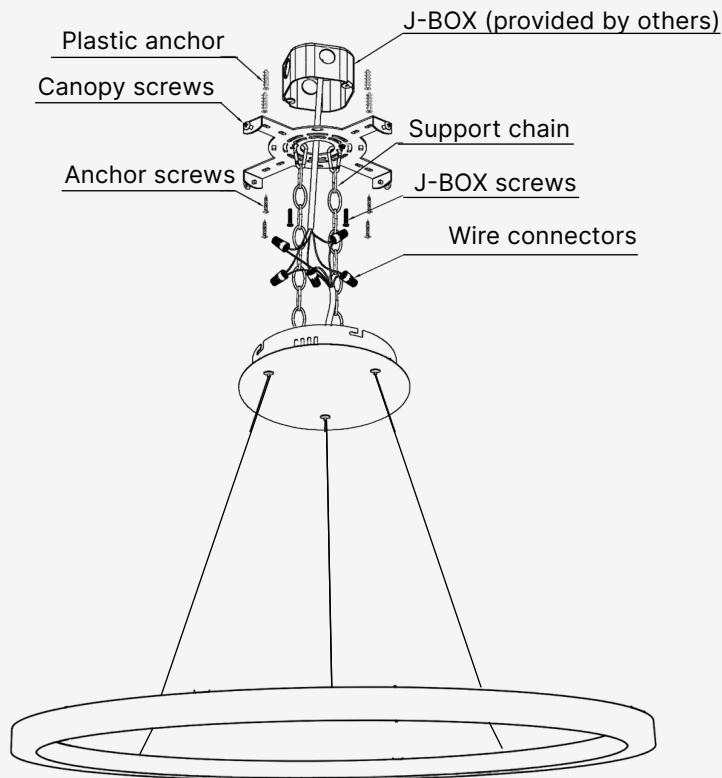
IMPORTANT: Carefully read all instructions before installing the fixture. Ignoring these guidelines could result in death, severe injury, or significant property damage. Keep these instructions for future use.

! WARNING! RISK OF FIRE, ELECTRIC SHOCK, OR SERIOUS INJURY

Installation must be performed by a qualified electrician in accordance with the National Electrical Code (NEC) and local regulations.

- Always disconnect power at the circuit breaker before starting work.
- **CAUTION – Risk of Fire:** Do not install or operate near flammable materials. Do not cover the fixture with any combustible materials.
- Use minimum 90°C rated supply conductors.
- Confirm voltage compatibility before connection.
- Operating temperature range: -20°C to +40°C. Relative humidity must remain between 0% and 95%. Operation outside these conditions may reduce product lifespan.
- Do not tamper with sealed LED components or touch LEDs with bare hands.
- Avoid circuits shared with HVAC or motorized equipment to prevent surges.
- In the event of failure, the driver or transformer may be replaced with a manufacturer-approved equivalent. The use of non-approved replacements is prohibited and will void the warranty.
- Connect fixtures in parallel only; do not daisy-chain.
- Use only UL-listed connectors appropriate for the environment (wet/dry).
- Ensure the mounting surface is level, stable, and structurally adequate.

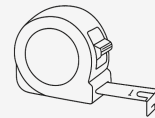
INSTALLATION DIAGRAM



Tools You May Need



Glasses



Measuring tape



Rubber gloves



Screwdriver



Drill



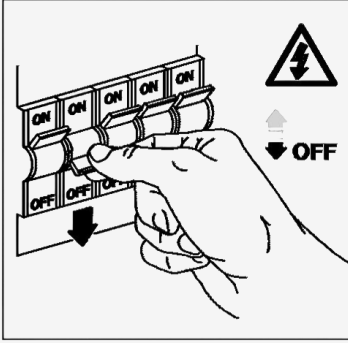
Ladder

CERTIFICATION



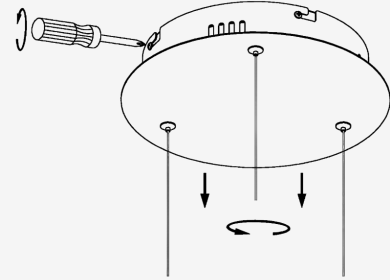
Step 1

Turn OFF the power at the main fuse box. Ensure the wall switch in the room where the fixture is being installed is also in the OFF position.



Step 2

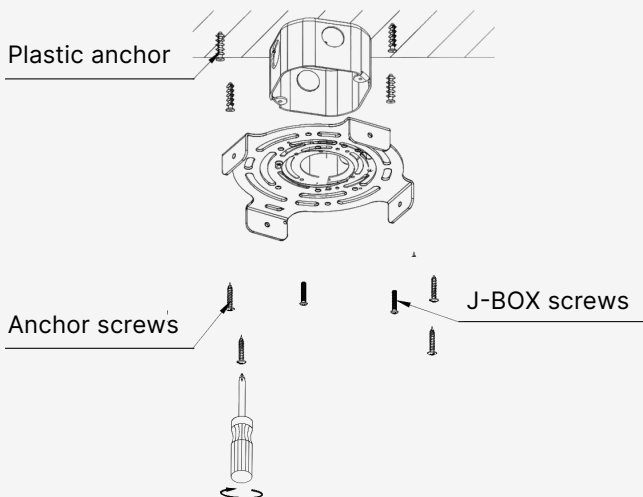
Use a screwdriver to loosen the screws securing the mounting canopy to the bracket from the side.



Step 3

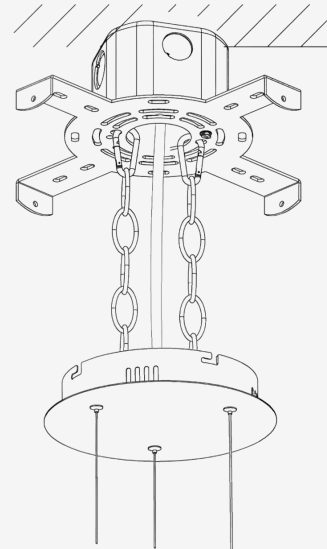
Remove the plastic anchors from the package. Drill four 8 mm diameter holes in the ceiling according to the mounting bracket layout. Insert the plastic anchors into the holes. Use two J-BOX screws to secure the mounting bracket to the junction box. Refer to the illustration below.

Note: The junction box must be a Garvin 54171-S or equivalent (provided by others).



Step 4

Use four self-tapping anchor screws to secure the mounting bracket to the ceiling.



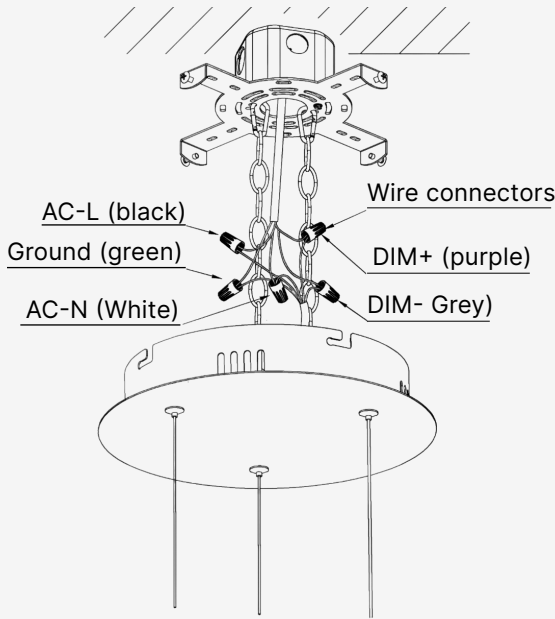
Attention: The mounting plate must be secured at all connection points — the junction box plus four outer points for small and medium fixtures, or eight outer points for large fixtures — to ensure proper support of the fixture's weight. Failure to use all mounting points may result in damage to the fixture and will void the product warranty.

CERTIFICATION



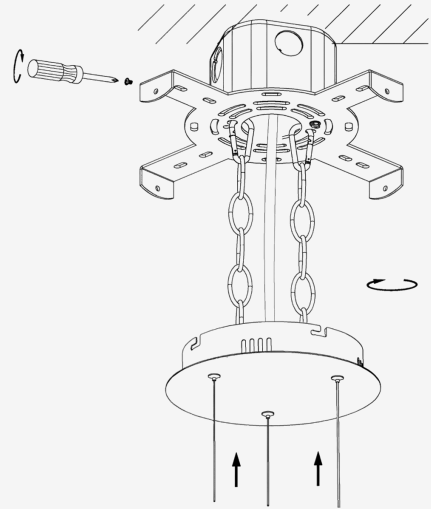
Step 5

Connect the fixture wires to the supply wires inside the J-Box using UL-listed wire connectors. Match Line (L), Neutral (N), Ground (G), and dimming wires (DIM+, DIM-) as applicable. After completing connections, place all wires and connectors neatly into the J-Box without stress or tension.



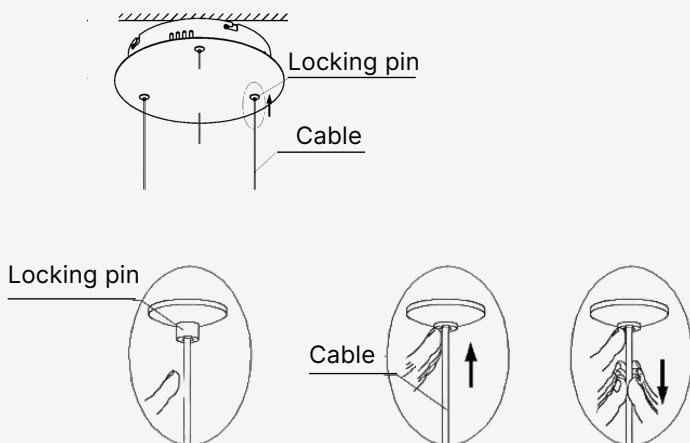
Step 6

Use a screwdriver to adjust the mounting bracket and mounting canopy.



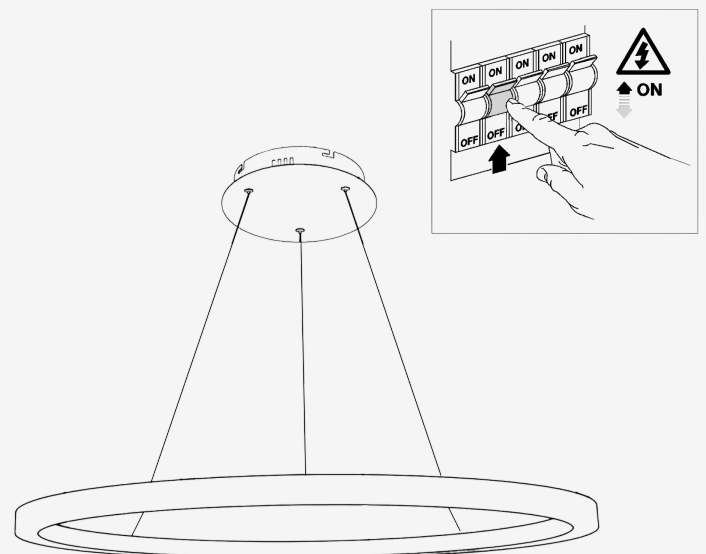
Step 7

Set the desired length of both the safety cable and the aircraft suspension cable. Secure both cables to the mounting bracket and canopy using the provided screws. Once fastened, carefully release all cables to ensure proper tension and alignment.



Step 8

Once installation is complete, turn the power ON at the main fuse box. The fixture should now operate properly.



CERTIFICATION



LIMITED WARRANTY

A We Lighting warrants this ceiling-mounted lighting fixture to be free from defects in materials and workmanship under normal use for a period of [5 years] from the date of purchase. This warranty applies only when the fixture is installed and operated in accordance with the instructions in this manual and all applicable building and electrical codes, including the National Electrical Code (NEC).

This warranty does not cover:

- Any damage resulting from incorrect installation, lack of proper maintenance, or mishandling.
- Operation with incompatible power sources, or unauthorized modifications to the product or its components.
- Physical damage caused by mechanical impact, corrosion, or installation in environments exceeding the fixture's ratings (e.g., temperature, humidity).
- Electrical failures due to power surges, voltage spikes, or shared circuits with inductive loads (e.g., HVAC, compressors).
- Installation in locations where the ceiling structure is not rated to support the weight of the fixture.
- Use in damp or wet locations unless the product is rated for such conditions.
- Exposure to grease, oil, dust, or chemicals that may deteriorate housing materials.

To file a warranty claim, contact our Customer Service department and provide proof of purchase, a detailed description of the issue, and photographs if available. A We Lighting reserves the right to inspect the product and determine eligibility under this warranty.

CERTIFICATION

